
Product Definition

- No-brand Product OEM/ODM Product
 Semi-finished Product Component

SDCFA-C04
SDXC to UDMA CF Type II Adapter
(4th Generation)

Specifications for Approval

Approval	Manager	Issued By

Revision History

Revision	Date	Description	PM
Draft	Jul, 2012	Initial Version	

Index

1	Introduction	1
2	Features and Specifications.....	2
2.1	Features.....	2
2.2	Specifications	3
2.3	Application Diagram.....	5
3	Accessories	6
3.1	Standard Accessories	6
3.2	Optional Accessories	6
4	Mechanical Information	7
4.1	SDCFA-C04 Overview	7
5	Package.....	8
5.1	Package Card (Optional)	8
5.2	Front & Back Labels (Optional).....	9
5.3	Volume & Weight of Blister Package	9
5.4	Volume & Weight of Bulk Package	10
	Appendix	11

1 Introduction



* This photo is for reference only; the actual product could be slightly different.

We proudly present you a new solution for converting the SD card to high-speed CF Card Type II. SDCFA-C04 is compatible with SD 3.0; it supports exFAT file system and accepts SD in any speed class including Class2/4/6/10 and UHS-1. This adapter is also equipped with high-speed CF interface and the access rate is faster than any similar products.

SDCFA-C04 supports converting SDXC, SDHC, SD, miniSD (with adapter), and microSD (with adapter) to Type II CF. SDCFA-C04 also supports the latest Wireless LAN SD and standard SDIO cards. The compatibility is better than previous generation product.

SDCFA-C04 is equipped with high-speed CF interface which supports UDMA CF transfer mode. It can show the actual speed of inserted high speed SD card. Any similar products would always seriously slow down the access rate of inserted media. However with SDCFA-C04 this situation would never occur.

SDCFA-C04 is very convenient for any digital device equipped with CF Type II socket, like Digital Camera, DSLR, PDA, Digital Photo Frame, Card Reader, Notebook, etc. You do not need a CF card for few CF devices, but you can use SD well instead of CF. Replace expensive CF card with cheap and fast SD card and experience the power of Wireless LAN SD, all you need is SDCFA-C04.

- Please be noted that SDCFA-C04 will not accelerate the inserted media.

2 Features and Specifications

2.1 Features

- SD interface supports SD spec 2.00 / 1.01; supports high speed(Class 10) and normal speed(Class 2/4/6) SDXC, SDHC, and SD.
- SD interface is compatible with SD spec 3.01; accepts UHS-1 speed SDXC and SDHC.
- SD interface supports SD cards in all capacities.
- SD interface accepts MicroSD or MiniSD with SD Adapter.
- SD interface supports Wireless LAN SD (iSDIO) or SDIO.
- CF interface is compliant with CompactFlash (CF+) 4.1.
- CF interface is compliant with PC Card Standard 8.0 / PCMCIA 2.1 / JEIDA 4.2
- CF interface is compliant with ATA / ATAPI-6.
- CF interface supports PC Card Memory Mode, PC Card IO Mode, and True IDE Mode.
- CF True IDE Mode supports Ultra DMA Mode / Multi-word DMA Mode / PIO Mode.
- File system supports FAT / FAT32 / exFAT / NTFS.
- Equipped with SPI Flash for firmware update.
- Equipped with push-push SD socket for easy card insertion and extraction.
- Type II CF design.
- SD card write-protect function disabled.
- Generic IDE / CompactFlash (storage) support by any OS.

2.2 Specifications

Input Interface	
SD (Push-Push)	<ul style="list-style-type: none"> • SD Spec 3.01 compatible • SD Spec 2.00 support • SD Spec 1.01 support • iSDIO support • SDIO support
Output Interface	
CF (Type II)	<ul style="list-style-type: none"> • CompactFlash (CF+) 4.1 compatible • PC Card Standard 8.0 compatible • PCMCIA 2.1 / JEIDA 4.2 compatible • ATA / ATAPI-6 compatible • PC Card Memory Mode / PC Card IO Mode / True IDE Mode support • True IDE Mode supports Ultra DMA Mode / Multi-word DMA Mode / PIO Mode
Supporting Cards	
SDXC	• All Capacities, Class 2/4/6/10/UHS-1
SDHC	• All Capacities, Class 2/4/6/10/UHS-1
SD	• All Capacities, Class 2/4/6/10
MicroSDXC	• All Capacities, Class 2/4/6/10/UHS-1 (Adapter Required)
MicroSDHC	• All Capacities, Class 2/4/6/10/UHS-1 (Adapter Required)
MicroSD	• All Capacities, Class 2/4/6/10 (Adapter Required)
MiniSDHC	• All Capacities, Class 2/4/6/10/UHS-1 (Adapter Required)
MiniSD	• All Capacities, Class 2/4/6/10 (Adapter Required)
iSDIO	<ul style="list-style-type: none"> • Wireless LAN SD / WiFi SD / WiFi SD Adapter (Tested Media: Eye-Fi WiFi SD / Eye-Fi X2 WiFi SD / TOSHIBA FlashAir SD / PQI Air Card / TREK FluCard Pro SD / ez Share SD)
SDIO	• SDIO Card (Requires additional driver for respective SDIO card)
Supporting File System	
FAT (FAT12 / FAT16) / FAT32 / exFAT (FAT64) / NTFS	

Device String in OS

SD to CF Adapter 4th Gen (No specific VID/PID, generic driver supported by OS)

Safety Approval

CE / FCC

Physical Character

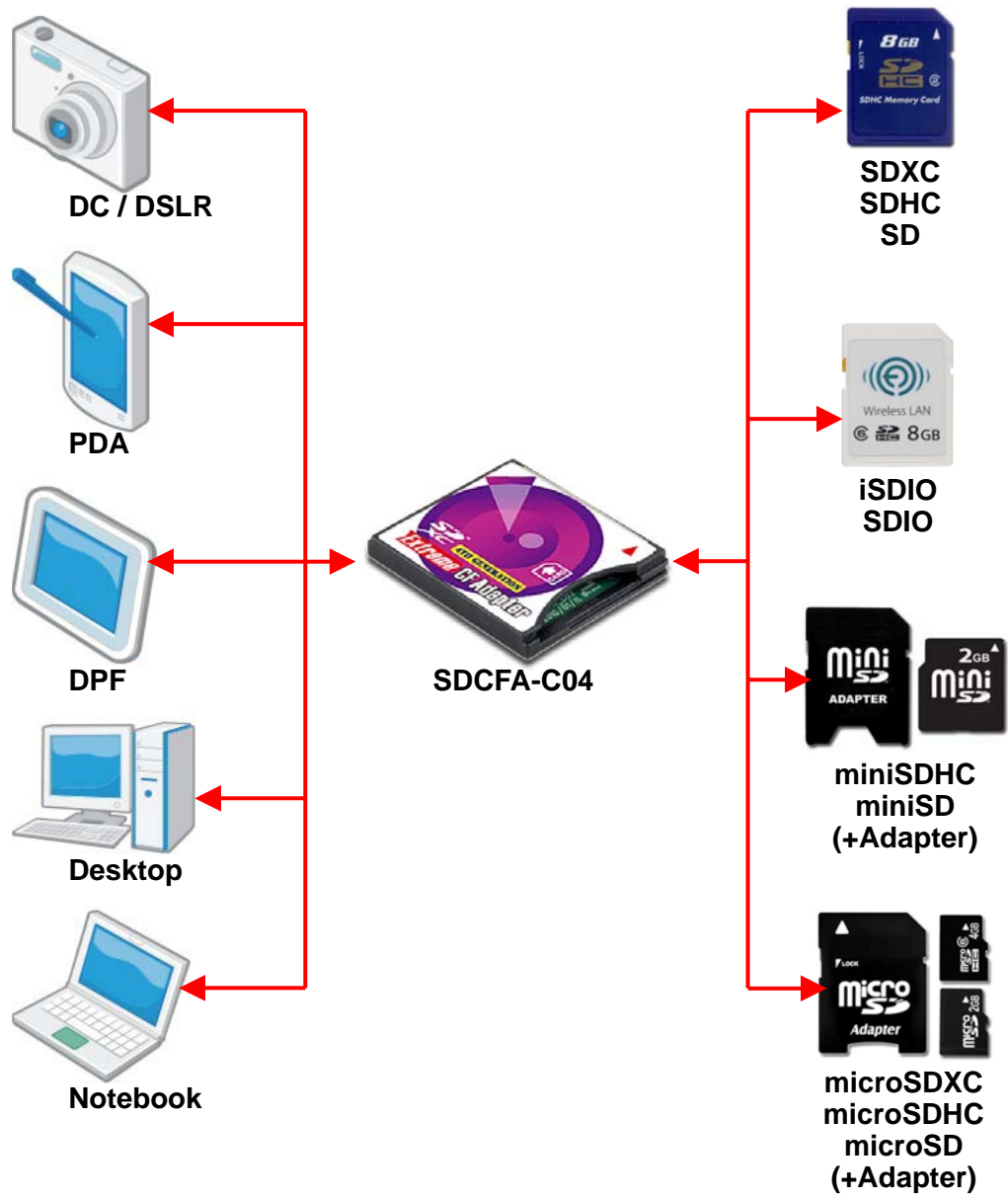
Length	• 42.8 mm
Width	• 36.4 mm
Height	• 5.0 mm

Weight

≐ 10g

- **Before using a card within exFAT file system on SDCFA-C04, please make sure your CF device also supports exFAT; or you may not use them on the CF device. If the CF device cannot support exFAT, please format the card again with FAT32 or directly format the card with the CF device.**

2.3 Application Diagram



* This photo is for reference only; the actual product could be slightly different.

3 Accessories

3.1 Standard Accessories

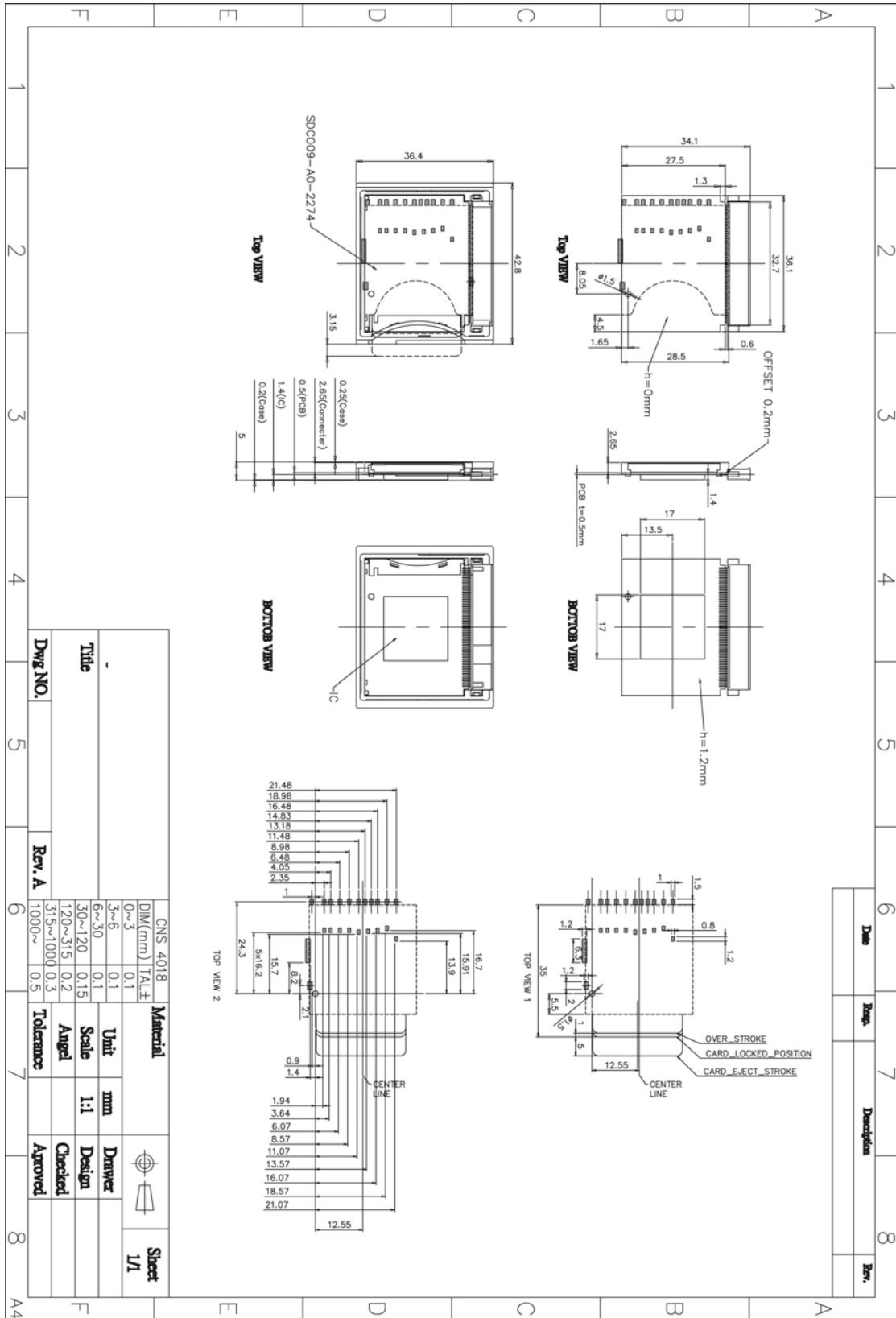
- SDCFA-C04 Adapter x1

3.2 Optional Accessories

- Front Label x1
- Back Label x1
- Blister Pack Set x1

4 Mechanical Information

4.1 SDCFA-C04 Overview

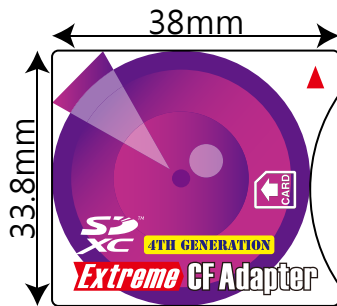


5 Package

5.1 Package Card (Optional)



5.2 Front & Back Labels (Optional)



5.3 Volume & Weight of Blister Package

- Blister Pack x 50 pcs → Inner Carton x 1
- Inner Carton x 8 → Outer Carton x 1
- Outer Carton x 1 = Blister Pack x 400 pcs

- Inner Carton: L265mm x W120mm x H100mm (Inside Diameter)
- Outer Carton: L505mm x W270mm x H220mm (Inside Diameter)

- G. W. per Blister Pack ≐ 21g
- G. W. per Inner Carton (50 pcs) ≐ 1.2kg
- G. W. per Outer Carton (400 pcs) ≐ 10kg

5.4 Volume & Weight of Bulk Package

- SDCFA-C04 x 25 pcs → Blister Tray x 1
- Blister Tray x 20 → Carton x 1
- Carton x 1 = SDCFA-C04 x 500 pcs

- Carton: L310mm x W300mm x H160mm (Outside Diameter)

- G. W. per Carton (500 pcs) ≐ 10kg

Appendix